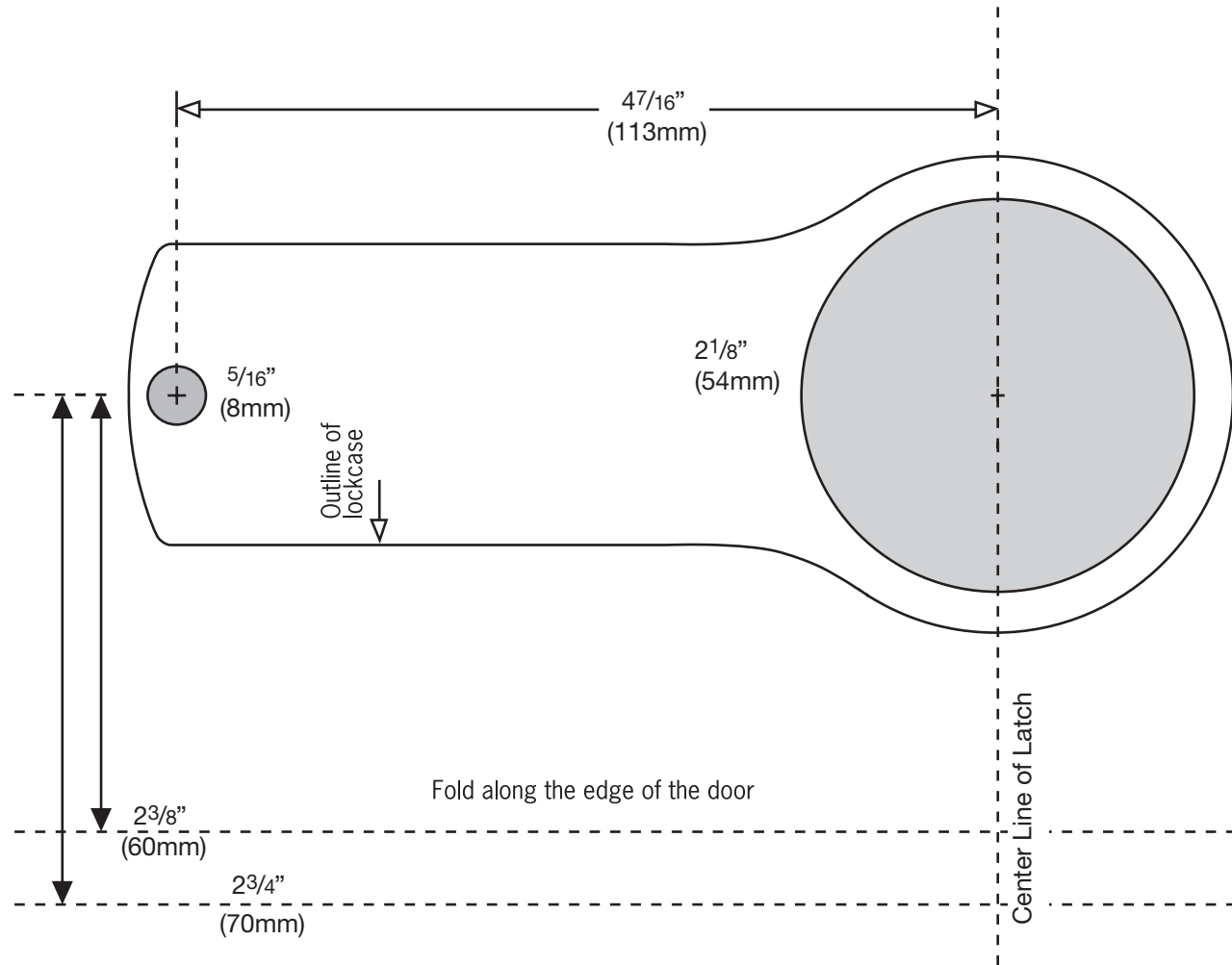


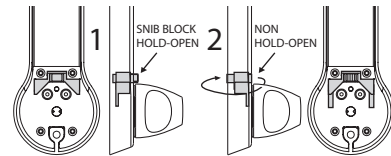
TEMPLATE



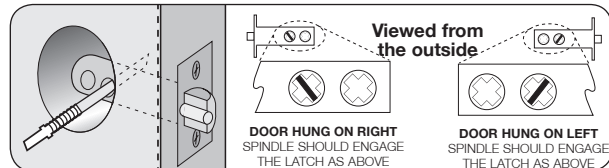
3. DISABLE HOLD OPEN FUNCTION

■ If required the hold open feature can be disabled as follows: Remove fixing plate by removing the four fixing screws and blue handing screw.

1. Lift out the snib block.
 2. Flip over and reset. Refit the fixing plate.
- Do not fit the blue handing screw.**



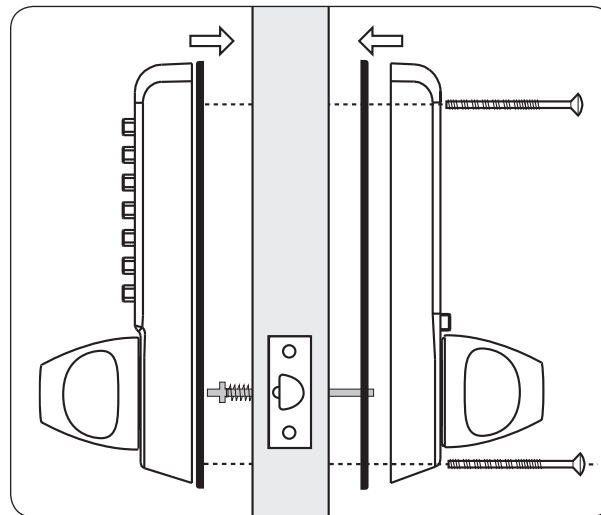
4. POSITIONING THE SPINDLE



- The spring-loaded spindle will fit doors between 1 3/8" and 2 1/2" (35mm-65mm) thick. For doors less than 2" (50mm) thick break off the 5/8" (15mm) section at the end of the spindle. For doors more than 2 1/2" (65mm) thick, ring the Helpline for advice. The spring keeps the spindle firmly engaged in the outside knob when the lock is assembled on the door.

- Insert the spindle, with the spring on the code side, through the 2 1/8" (54mm) hole in the door, and make sure that it engages the latch correctly for the hand of the door (see inset diagram).

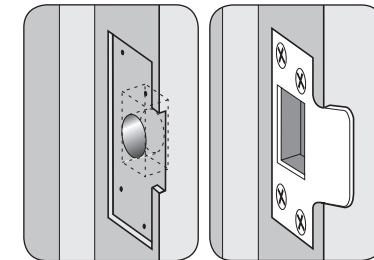
5. FIXING THE LOCK



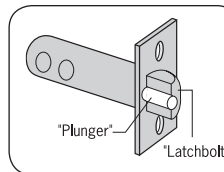
- Cut the fixing bolts to suit the door thickness, allowing at least one threaded section to screw into the lockcase.
- Hold the lock case and the backplate, with the seals, onto the door with the spindle in position.
- Using the fixing bolts screw everything together through the top and bottom holes of the backplate. Before final tightening make sure that the lock is vertical, and test the mechanism to ensure that it is all moving easily.

DO NOT CLOSE THE DOOR UNTIL YOU ARE SURE THAT THE CODE WORKS.
DO NOT over-tighten the fixing bolts as this may cause distortion and lead to poor operation.

6. FITTING THE STRIKE PLATE



NB The plunger beside the latchbolt deadlocks the latchbolt and protects it against manipulation. IT MUST NOT enter the strike plate aperture when the door is closed.



- Ensure that there are no obstructions to prevent the door closing properly into its frame, such as litter trapped in the hinge side.
- Position the strike plate on the door frame so that it lines up with the flat of the latchbolt, **NOT THE PLUNGER**.
- Draw around the aperture of the strike plate. Chisel out the aperture 5/8" (15mm) deep to receive the latchbolt. Fix the strike plate to the surface of the frame with one screw only. Close the door and ensure that the latch bolt enters the aperture easily, and is held without too much 'play'. When satisfied, draw around the final position of the strike plate, remove it and cut a 1/16" (1mm) rebate to enable it to fit flush. Re-fix the strike plate with both screws.

11-300MLUS-0912

CODELOCK 300 MECHANICAL

Mortise Latchset with Key Override

Helpline, service & spares
TOLL FREE 1 877 263 3562

CODELOCKS INC - US

Tel +1 714 9792900
 Fax +1 714 9792902
 sales@codelocks.co.us
www.codelocks.us

CODELOCKS LTD - UK

Tel +44 (0)1635 239645
 Fax +44 (0)1635 239644
 sales@codelocks.co.uk
www.codelocks.com

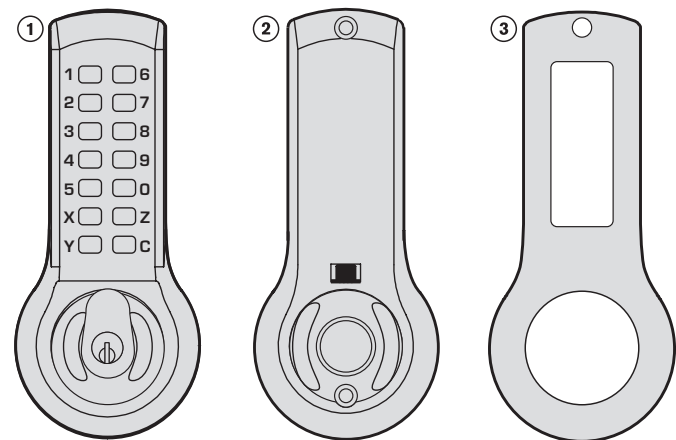
CODELOCKS
 control + convenience

INSTALLATION INSTRUCTIONS



Mortise Latchset

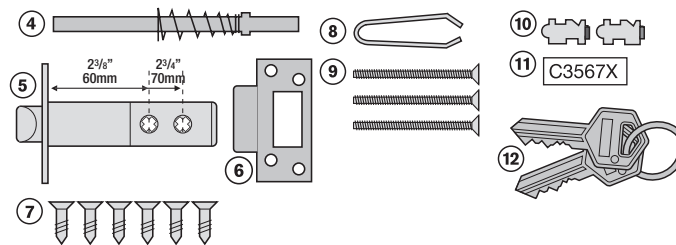
CONTENTS



1. Front plate
2. Back plate (hold-open models have a sliding snib)
3. Gaskets x 2
4. Spring loaded spindle
5. Latch $2\frac{3}{8}$ " (60mm) and $2\frac{3}{4}$ " (70mm) backset
6. Strike plate
7. Wood screws x 6
Use with latch & strike plate
8. Tweezers (for changing the code)
9. Fixing bolts 3 supplied (spare x1)
10. Code tumblers (spare x 2)
11. Code card
12. 2 keys - key override models only

Tools required for installation

- Power drill
- 1" (25mm), $2\frac{1}{8}$ " (54mm) & $\frac{5}{16}$ " (8mm) drill bits
- Bradawl
- Phillips screwdriver size 2
- Chisel maximum 1" (25mm)
- Hammer/Mallet
- Stanley knife
- Adhesive tape
- Pencil
- Tape measure

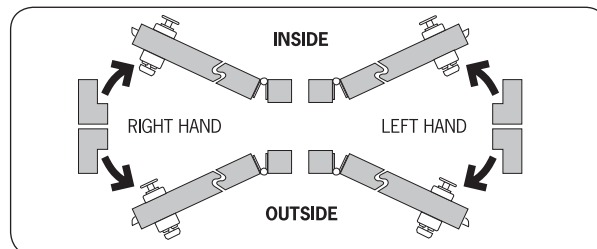


SPECIAL NOTES

You are advised to familiarise yourself with the instructions before starting work.

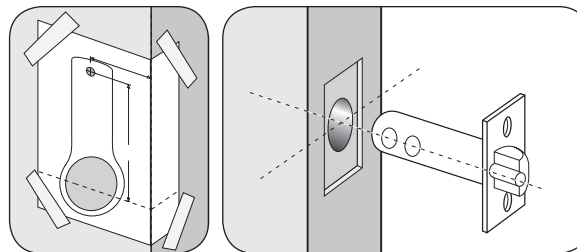
- As standard locks are supplied as 'hold open' function with a snib on the backplate. This enables the latchbolt to be held open when required.
- When using the 'hold open' function please note that the backplate is fitted with a blue screw to stop the handle moving in the wrong direction. The screw should be in the left hand hole for a right hand door or the right hand hole for a left hand door.
- To disable the 'hold open' see note **4. Disable Hold-Open Function**.
- Make sure that the knob of the backplate turns freely. If your lock is a 'hold-open' model then check that the snib will engage and hold the knob in the 'latch-open' position.
- Check that the latch bolt moves freely by pressing at the end and also by turning the flat spindle in the latch cam.

1. CHECK THE HAND OF YOUR DOOR



Viewed from outside, a door is right handed if the hinges are on the right, and left handed if the hinges are on the left.

2. APPLY THE TEMPLATE



- Crease the template along the line marked Door Edge, and tape it to the door.
- Mark the $2\frac{1}{8}$ " (54mm) and the $\frac{3}{8}$ " (8mm) holes. Mark the center line of latch in the middle of the door edge. Now apply the template to the other side of the door, aligning it with your first mark in the middle of the door edge.
- Mark the 2 holes again.
Keeping the drill level and square to the door, drill holes from both sides to avoid splintering out of door face.

Positioning and fixing the latch

- Mark a central point on the 'center line of latch' on the door edge.
- Mark the depth of $3\frac{1}{2}$ " (90mm) on the drill bit with tape to act as a visible depth limit. Drill a 1" (25mm) hole, $3\frac{3}{8}$ " (90mm) deep, keeping the drill level and square to the door.
- Insert the latch into the hole, and with the edges parallel to the door, draw around the face plate.
- Remove the latch. Score the pencil line with a Stanley Knife to avoid splitting prior to chiselling. Chisel a $\frac{1}{8}$ " (3mm) rebate to fit the latch face flush to the door edge.
- Fix the latch with the wood screws, with the bevel towards the door frame.

TEMPLATE

