

ACTIVATE GENERATE CONTROL

NetCode is the smart way to generate time-sensitive codes for a wide range of lockers and cabinets.

KL1060

Through the online NetCode portal or via the Codelocks simple API (application programming interface), you can create codes that have a specified start date, time and duration. Once the duration expires, the codes no longer work. Using time-sensitive codes is a more secure way to grant access as the code will not work outside a designated timeslot. Issue codes to visiting service engineers, delivery personnel (drop boxes), and medium-term locker rental. Generated codes can be sent by email or SMS.

FEATURES

- No wired or wireless communication required
- Create codes for short, medium and long-term
- Web-based NetCode generation
- Send generated codes via email or SMS*
- Three modes of operation
- Five types of NetCode
- Additional NetCode features
- 15,000 operations from 2 x AAA batteries
- 11 button keypad
- Master Code
- Sub-Master Code
- User Code
- Technician Code
- NetCode
- Battery override
- Easy to install and set up
- IP55 rated when fitted with gasket
- All parts / fixings / templates included
- Two year guarantee**



FUNCTIONS

Three Modes of Operation

In addition to NetCode, the KL1060 NC retains the standard Public and Private Functions.



NetCode

This function allows temporary access. Create time-sensitive codes via the NetCode portal or your own application with our simple API (application programming interface).

Private Function

This function is used where the same code will be repeatedly used. Choose a single four digit User Code to use multiple times. Ideal for use where the lock is allocated to a single person for a long period of time.

Public Function

This function is used for short-term, multiple occupancy applications. Enter a four digit User Code to lock the locker, the same code is used to unlock. The lock remains open, ready for a new user and a new code.

TYPES OF NETCODE

Five types of NetCode are available:

- Short-term multi-use codes with durations from 1 to 12 hours and 1 to 7 days
- Short-term single-use codes with durations from 1 to 12 hours and 1 to 7 days
- Medium-term codes with durations from 1 to 21 days + 28 days
- Long-term codes that work for periods of up to 1 year
- Codes that will expire on a particular date

ADDITIONAL NETCODE FEATURES

New NetCode Blocks Previous NetCode

This feature automatically blocks the last used NetCode when a new NetCode is entered.

Mode Restrictions

Choose which types of NetCode to support. This is a useful feature if the number of potentially available NetCodes needs to be reduced.

Block a NetCode

Block a NetCode directly on the lock using either the Master Code or another valid NetCode.

Person User Code

Allow a NetCode user to create a personal 4 digit number that retains the same validity period as their originally allocated NetCode.

NETCODE PORTAL

All NetCode locks are registered via the web-based NetCode Portal. Once registered, NetCodes can be generated and shared via email and SMS text message. A built-in history provides an audit of all NetCodes created for each lock.

Additional Portal Features

Profile Management

Customise notifications and settings.

Associate Users

Add additional users to your account. These users can generate NetCodes for your locks.

The NetCode Portal can be customised via CSS and custom logos added. For CSS customise, a hosting charge is applied. Please contact Codelocks to discuss these options.

NetCode History

View the NetCodes created for every registered lock on the account.

Language

Choose from English and German. Language pack available for translation into other languages.

API

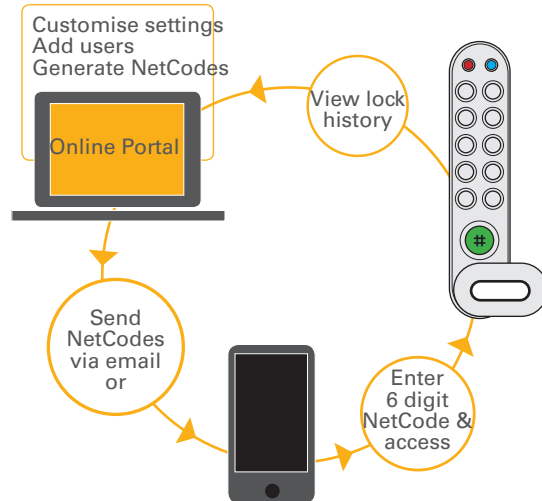
Codelocks provide a simple API (application programming interface) to enable customers to generate NetCodes via their own applications. All standard NetCode types can be created via the API. Prior to generating a NetCode, the lock must be registered via the Portal. Please contact Codelocks to discuss these options.

*Additional charges apply – Buy SMS credits from Codelocks to enable sending of NetCodes via SMS straight to mobile phones.

**Codelocks and KitLocks electronic locks offer a two year guarantee and will be repaired, serviced or replaced free of charge if they develop a manufacturing fault. Faults caused by misuse, abuse and/or poor fitting are not covered by the guarantees.

TECHNICAL SPECIFICATIONS

Operations	Up to 15,000 openings
Batteries	2 x 1.5 AAA cells (supplied)
Low Battery Warning	Red LED will flash on opening to indicate batteries need to be changed
Memory	Non-volatile memory will be retained
Battery Override	A 9 volt battery can be placed against external contacts
Material	Zinc Alloy
Functions	Private, Public and NetCode
Door Thickness	Ready to fit doors up to 1" (25mm)
Buttons	11 individual round buttons
Fitting	Easy to install set up and program
Fitting Options	Vertical as standard (right and left hand available)
Finish	Silver gray as standard (colour options available)
External Dimensions (to top of handle)	5 ³ / ₈ " L x 1 ⁵ / ₁₆ " W x 1 ¹ / ₈ " D*
IP55 Rated	When used with rubber gasket



Complete Control Wherever You Are



www.kitlock.com

KitLock